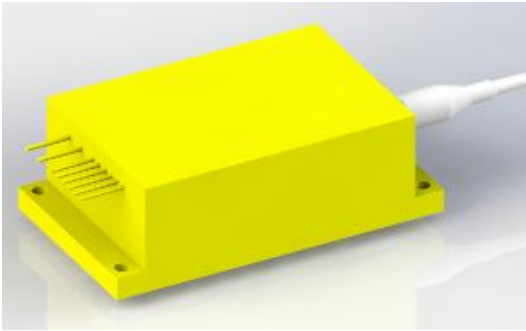
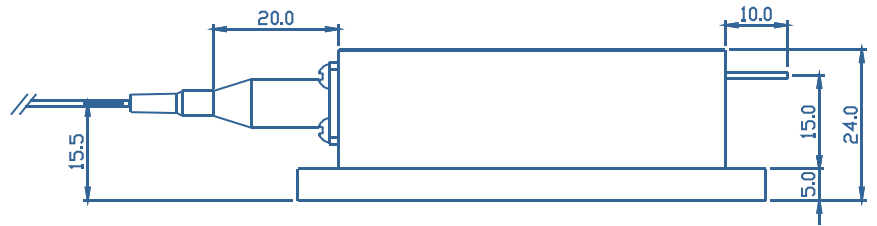
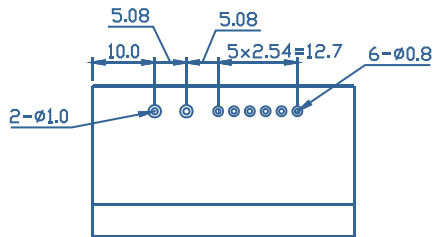


## C-Series High Power Laser Diode Module



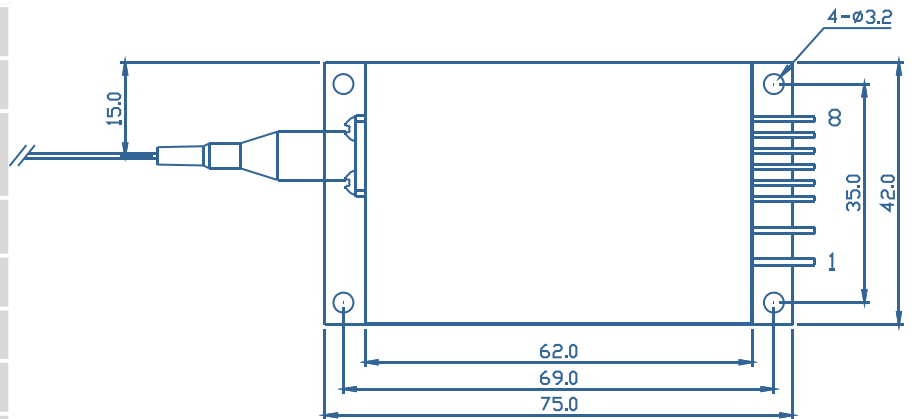
- Features**
- ◆ High output power of 4.5W
  - ◆ 105μm/0.22NA multimode optical fiber
  - ◆ Center wavelength 635±5nm
- Applications**
- ◆ Medical Application
  - ◆ Scientific Research Application

### Package Dimensions (mm)



**Pin-out Assignment**

Pin	Function
1	LD (+)
2	LD (-)
3	TEC(-)
4	PD(N)
5	PD(P)
6	Thermistor
7	Thermistor
8	TEC(+)



## Typical Device Performance (25°C)

	Min	Typical	Max	Unit
<b>Optical</b>				
CW Output Power	-	4.5	-	W
Center Wavelength	-	635±5	-	nm
<b>Electrical</b>				
Threshold Current	-	0.2	-	A
Operating Current	-	0.9	-	A
Operating Voltage	-	17.0	-	V
Slope Efficiency	-	6.4	-	W / A
Power Conversion Efficiency	-	29	-	%
<b>Fiber*</b>				
Fiber Core Diameter	-	105	-	μm
Fiber Cladding Diameter	-	125	-	μm
Numerical Aperture	-	2.0	-	m
Fiber Connector	-	Optional	-	-

\* Customized fiber and connector available.

## Absolute Ratings

	Min	Max	Unit
Operating Temperature	15	35	°C
Operating Relative Humidity	-	75	%
Cooling Mode	-	Water cooling (25°C)	-
Storage Temperature	-20	80	°C
Storage Relative Humidity	-	90	%
Lead Soldering Temperature (10 s max)	-	250	°C

This instruction is for reference only. Han's TCS improves its products continually, therefore may change specifications without notice to customers, for details, please contact with Han's TCS sales.

@2022 Han's TianCheng Semiconductor Co., Ltd. All rights reserved.